



NATA LIGHTNG CO.,LTD.
www.nata.cn
Email:info@nata.con
Tel:+86-750-3770000 Fax:+86-750-3771111
Address:380JinOu Road,GaoXin Zone,Jiang Men City,Guangdong,Ching

Nata

LumCAT: 1-1063-N	
Luminaire: 92.361.000	
Report No: 220519-B002	Voltage(V): 38.1800
Test No: 220519-C002	Current(A): 0.3610
LampCAT: CREE CXA1507	Power (W): 13.7820
Lamp flux(lm): 1272.8	PF: 0.0000
Number of Lamps: 1	Ballast type: DC
Length(mm): 43	Width(mm): 43
Phm Type: C	Height(mm): 0

Photometric Results

Lumens(lm): 1043.07
Efficiency(%): 81.95%
Lumens(lm)/Power(W): 75.68
Central intensity(cd): 1989.921
Maximum intensity(cd): 1989.921
Angle of maximum intensity: C=0.0 γ =0.0
Beam Angle(50%Imax): [C0/180]Total=43.5
 [C90/270]Total=43.5
Field angle(10%Imax): [C0/180]Total=64.5
 [C90/270]Total=64.5
Maximum s/h(1/2): C0_180=0.71 C90_270=0.71
Maximum s/h(1/4): C0_180=0.68 C90_270=0.68
Up flux rate of lamp(%): 0.00%
Down flux rate of lamp(%): 81.95%
Up flux rate of LUM(%): - -
Down flux rate of LUM(%): 100.00%
CIE Type : Direct lighting
Output flux ratio in π solid angle : 97.764%

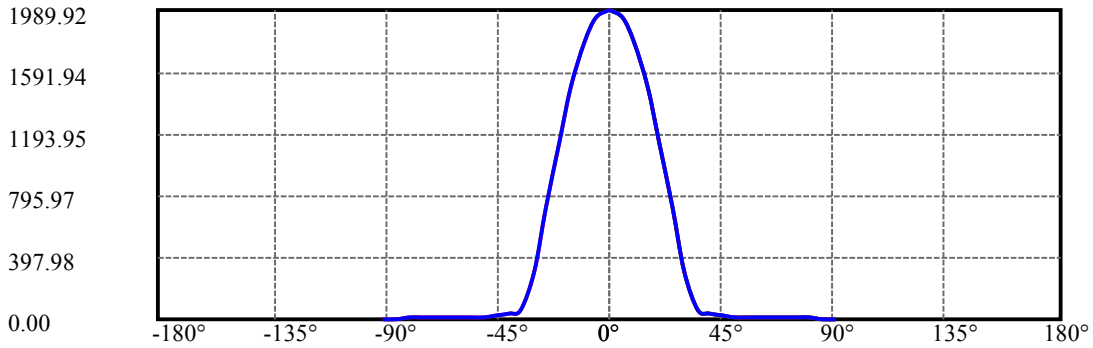
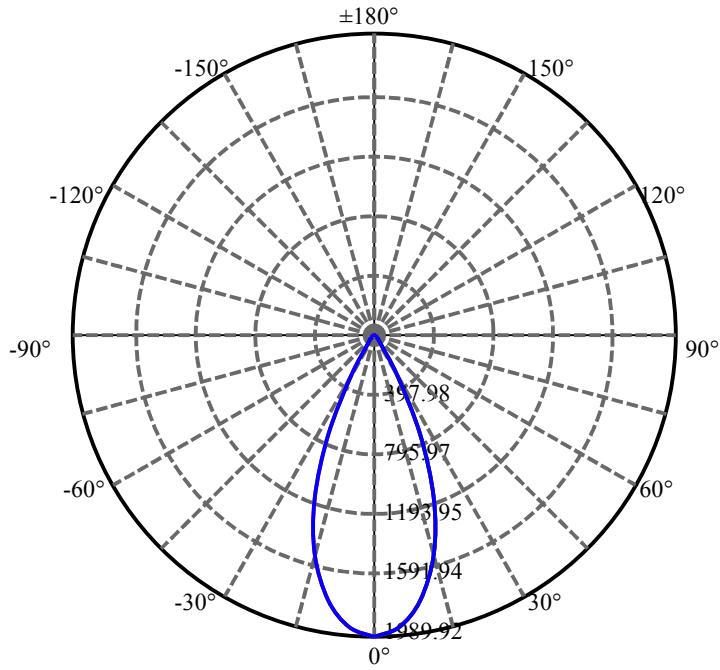
$\gamma(^{\circ})$	Average I(cd)	Zonal F(lm)	Sum F(lm)	Eff Flux(%)	Eff Sum(%)
0.0	1989.921	0.000	0	.000%	.000%
5.0	1936.517	46.939	46.939	3.688%	4.500%
10.0	1774.213	132.744	179.684	10.430%	17.226%
15.0	1498.229	194.119	373.803	15.252%	35.837%
20.0	1142.752	217.654	591.457	17.101%	56.703%
25.0	721.300	195.505	786.962	15.361%	75.447%
30.0	313.120	130.907	917.868	10.285%	87.997%
35.0	60.418	55.006	972.874	4.322%	93.270%
40.0	32.042	15.426	988.301	1.212%	94.749%
45.0	22.878	10.169	998.47	.799%	95.724%
50.0	18.053	8.271	1006.74	.650%	96.517%
55.0	14.281	7.030	1013.771	.552%	97.191%
60.0	11.555	5.972	1019.742	.469%	97.764%
65.0	9.516	5.122	1024.865	.402%	98.255%
70.0	8.298	4.511	1029.375	.354%	98.687%
75.0	7.402	4.104	1033.479	.322%	99.080%
80.0	6.715	3.777	1037.256	.297%	99.443%
85.0	5.064	3.201	1040.457	.251%	99.749%
90.0	4.481	2.614	1043.07	.205%	100.000%

ZONAL LUMEN SUMMARY

Zone	Lumens	%Lamp	%Fixt
0-30	917.87	72.12%	88.00%
0-40	988.30	77.65%	94.75%
0-60	1019.74	80.12%	97.76%
0-90	1040.46	81.75%	99.75%
0-120	1040.46	81.75%	99.75%
0-180	1043.07	81.95%	100.00%
60-90	26.69	2.10%	2.56%
90-120	0.00	0.00%	0.00%
90-130	0.00	0.00%	0.00%
90-150	0.00	0.00%	0.00%
90-180	0.00	0.00%	0.00%
0-26.81	834.46	65.56%	80.00%

ZONAL LUMEN SUMMARY

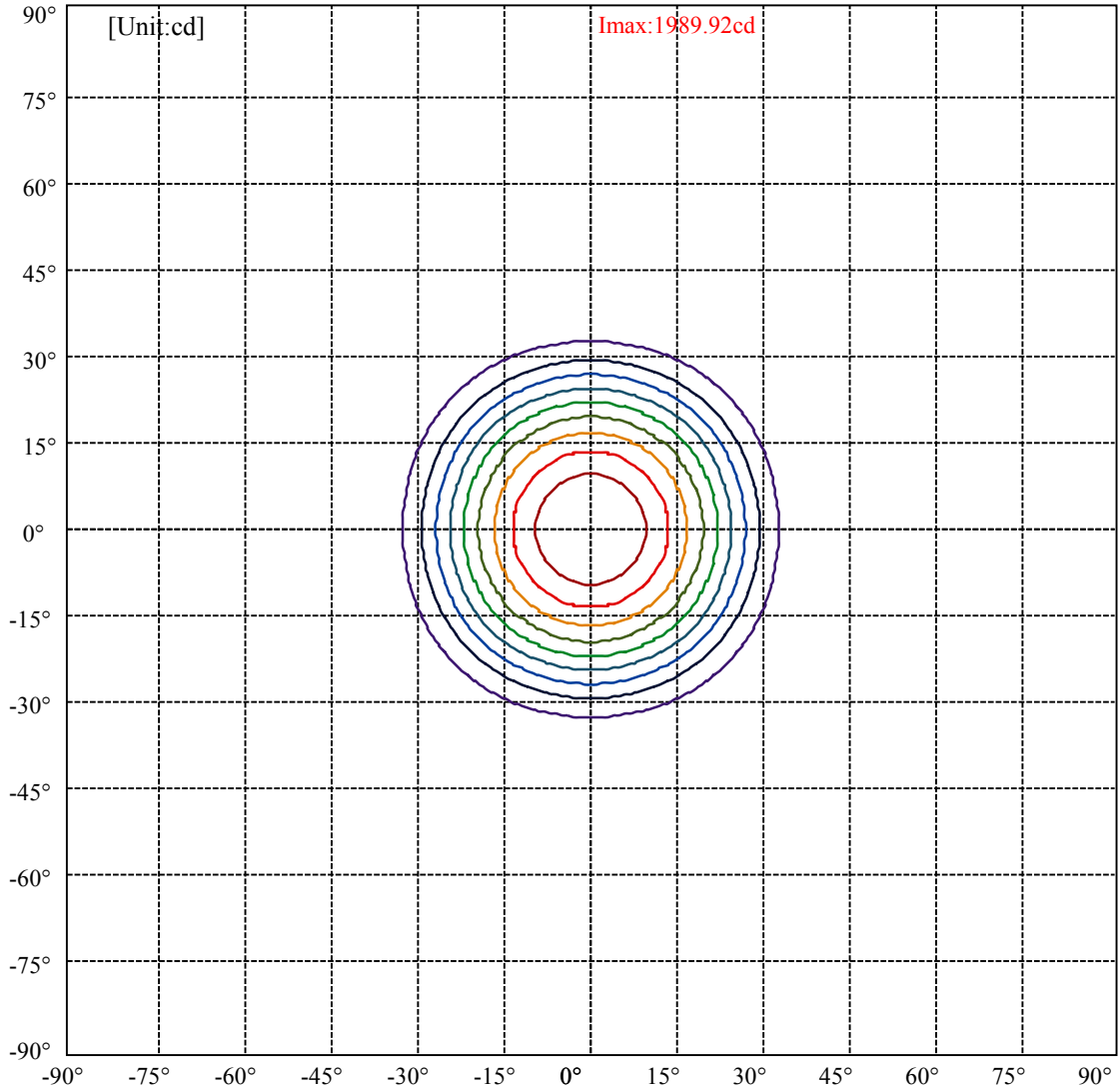
0-10	179.68
10-20	411.77
20-30	326.41
30-40	70.43
40-50	18.44
50-60	13.00
60-70	9.63
70-80	7.88
80-90	3.20
90-100	0.00
100-110	0.00
110-120	0.00
120-130	0.00
130-140	0.00
140-150	0.00
150-160	0.00
160-170	0.00
170-180	0.00



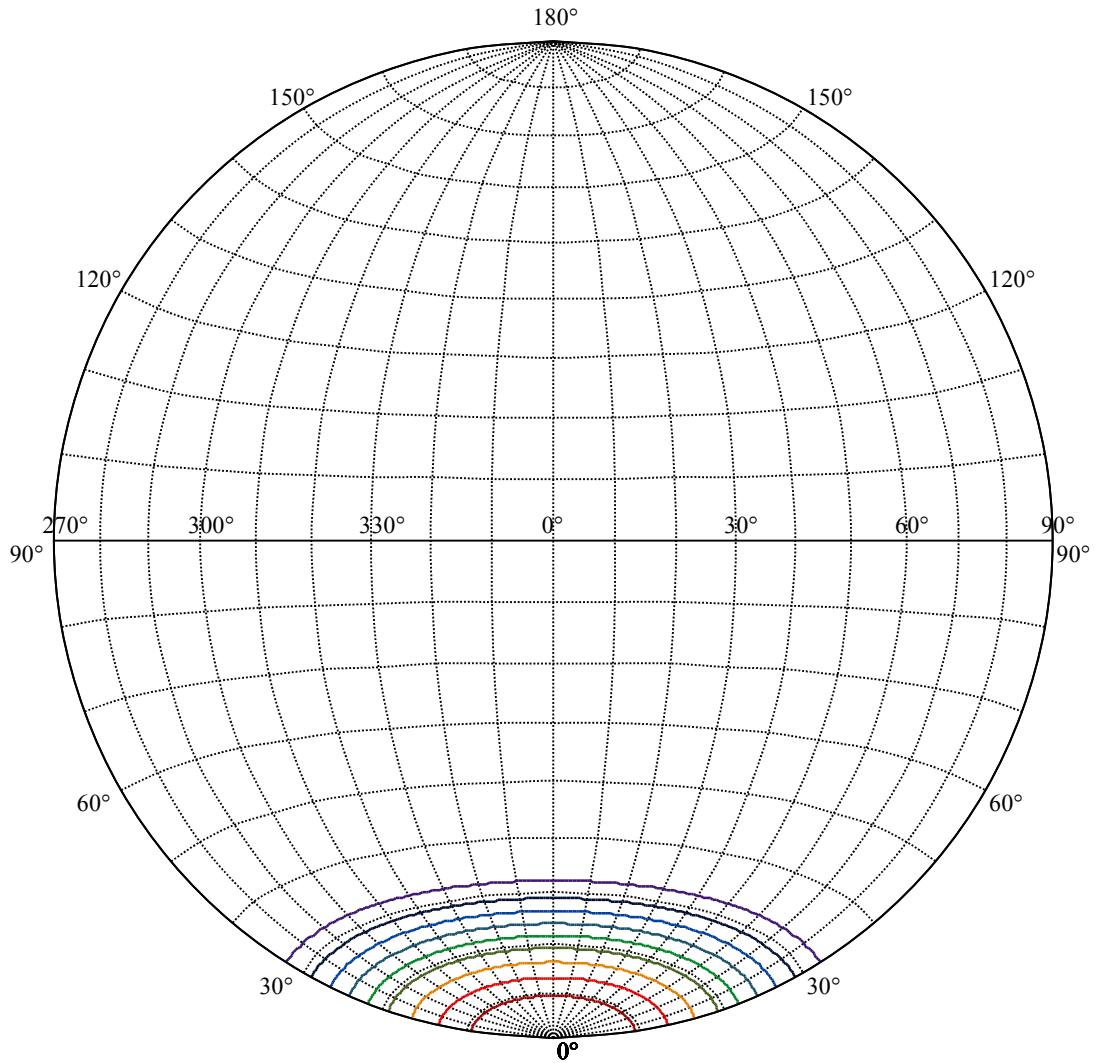
C0(Max): —————
C0/C180: —————
C90/C270: —————

Field angle(10%Imax):C0/180Left:32.3 Right:32.3
:C90/270Left:32.3 Right:32.3

Beam Angle(50%Imax):C0/180Left:21.8 Right:21.8
:C90/270Left:21.8 Right:21.8



(10%Imax) 198.992	—
(20%Imax) 397.984	—
(30%Imax) 596.976	—
(40%Imax) 795.968	—
(50%Imax) 994.96	—
(60%Imax) 1193.95	—
(70%Imax) 1392.94	—
(80%Imax) 1591.94	—
(90%Imax) 1790.93	—



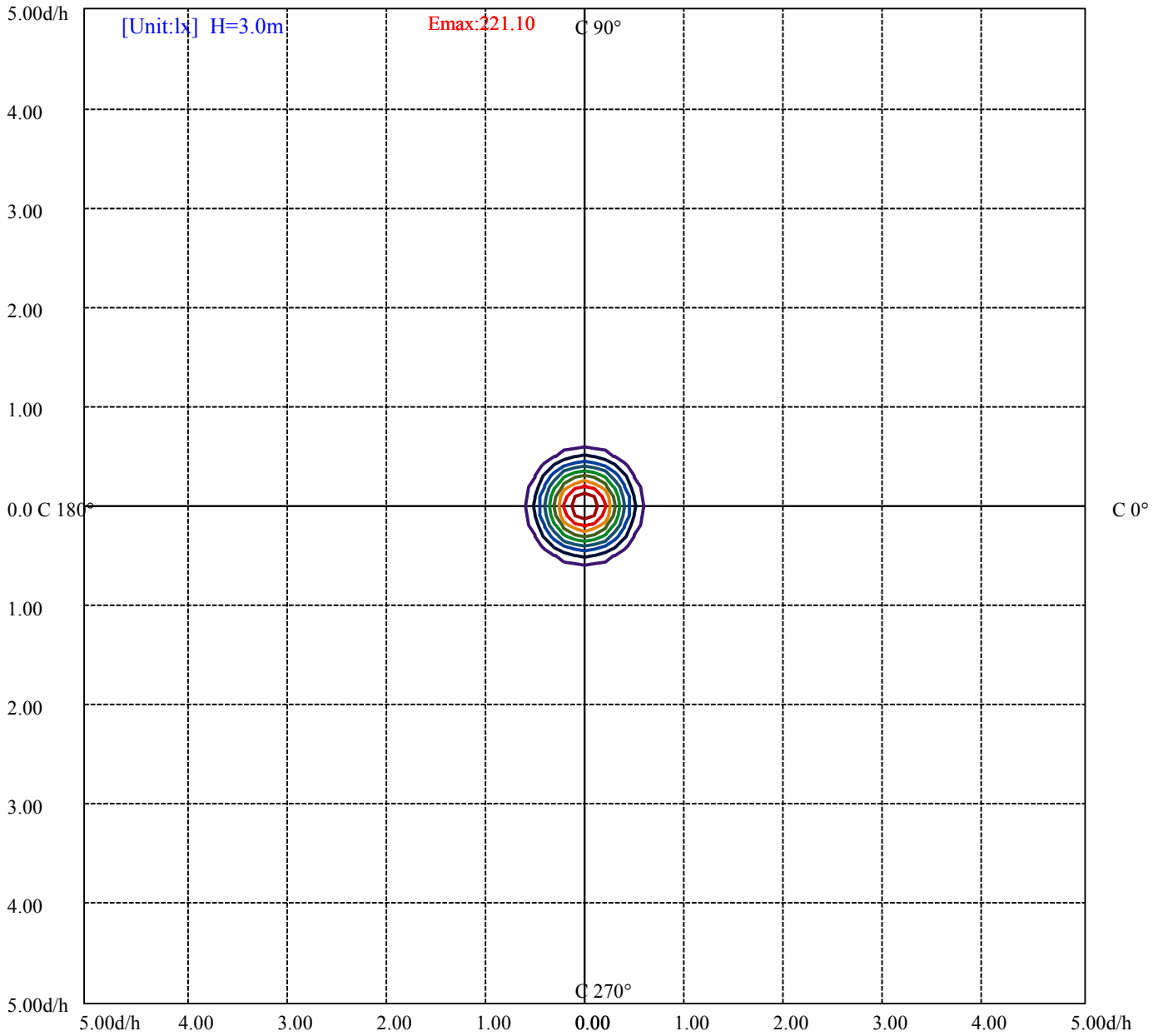
House

[Unit:cd]

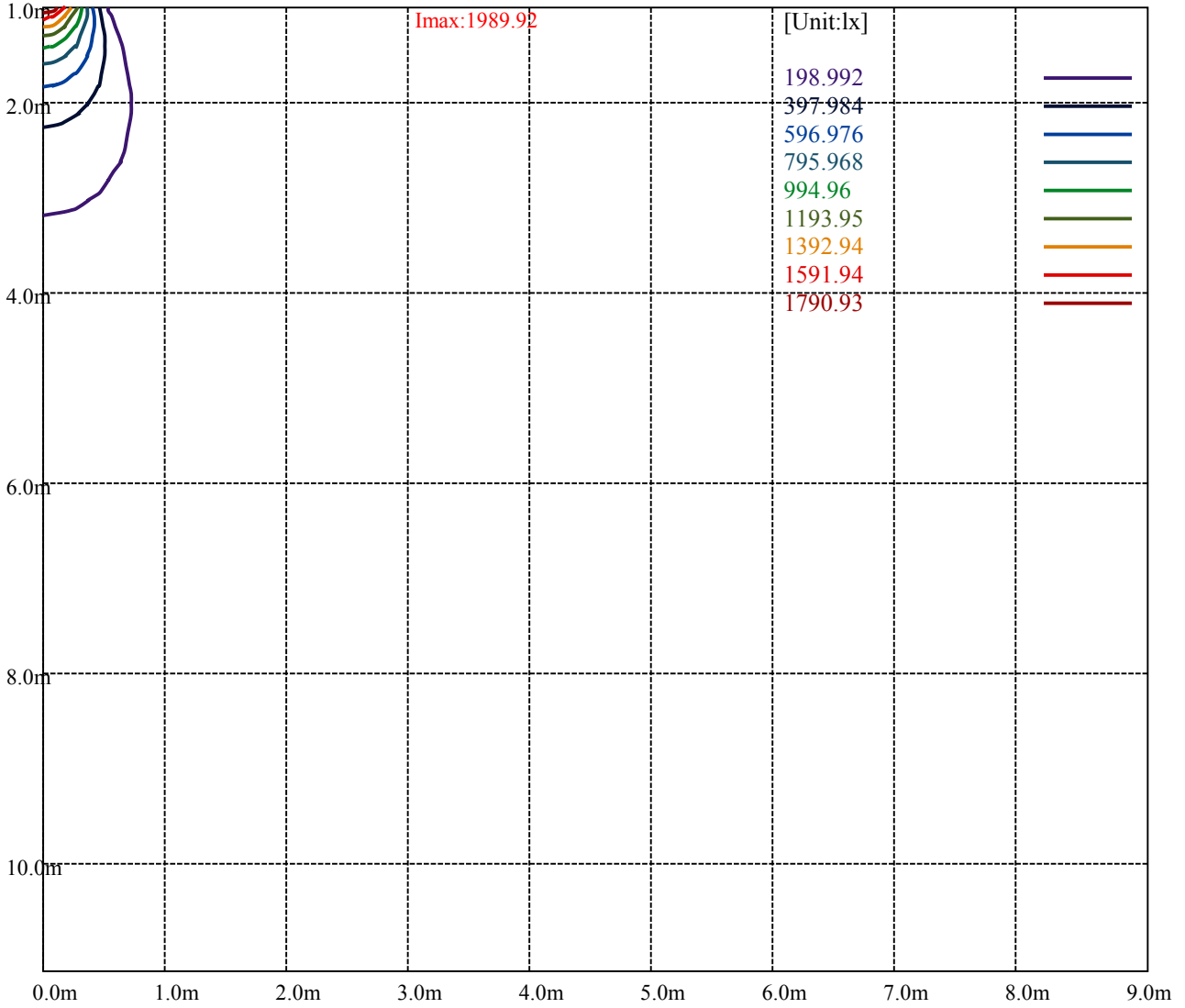
Road

I_{max}:1989.92

(10%I _{max}) 198.992	—
(20%I _{max}) 397.984	—
(30%I _{max}) 596.976	—
(40%I _{max}) 795.968	—
(50%I _{max}) 994.96	—
(60%I _{max}) 1193.95	—
(70%I _{max}) 1392.94	—
(80%I _{max}) 1591.94	—
(90%I _{max}) 1790.93	—



- (10%Emax) 22.11022
- (20%Emax) 44.22044
- (30%Emax) 66.33067
- (40%Emax) 88.44089
- (50%Emax) 110.5511
- (60%Emax) 132.6611
- (70%Emax) 154.7711
- (80%Emax) 176.8822
- (90%Emax) 198.9922



Luminance Table

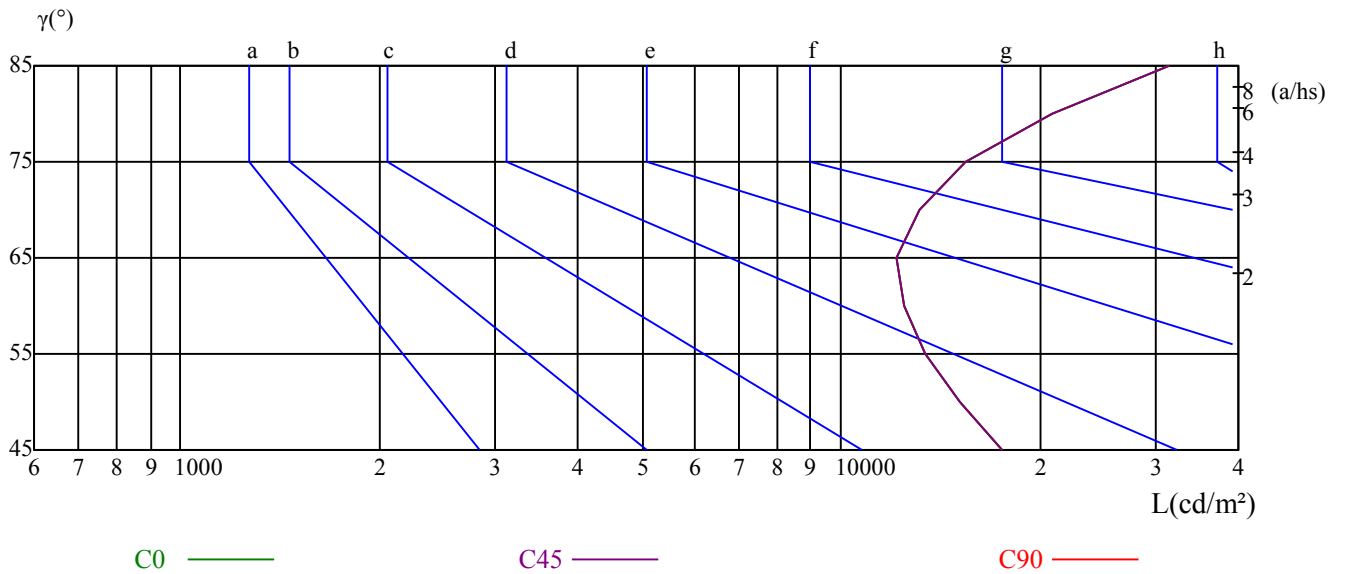
γ	45	50	55	60	65	70	75	80	85
C0	17498	15189	13466	12498	12177	13122	15467	20913	31424
C45	17498	15189	13466	12498	12177	13122	15467	20913	31424
C90	17498	15189	13466	12498	12177	13122	15467	20913	31424

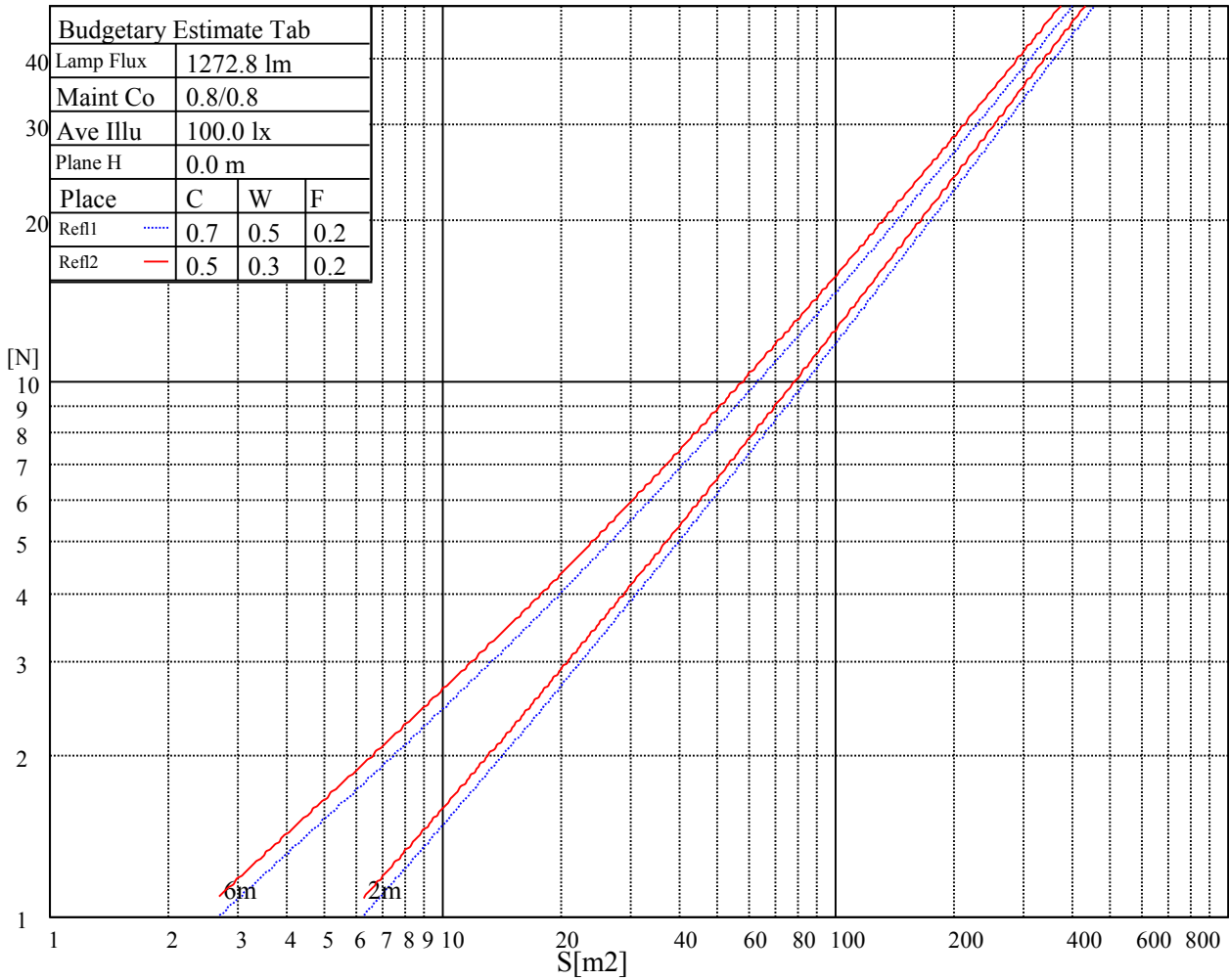
L(Hor)(65)	L(Ver)(65)	L45(65)	L(Hor)(75)	L(Ver)(75)	L45(75)	L(Hor)(85)	L(Ver)(85)	L45(85)
12177	12177	12177	15467	15467	15467	31424	31424	31424

Glare Table

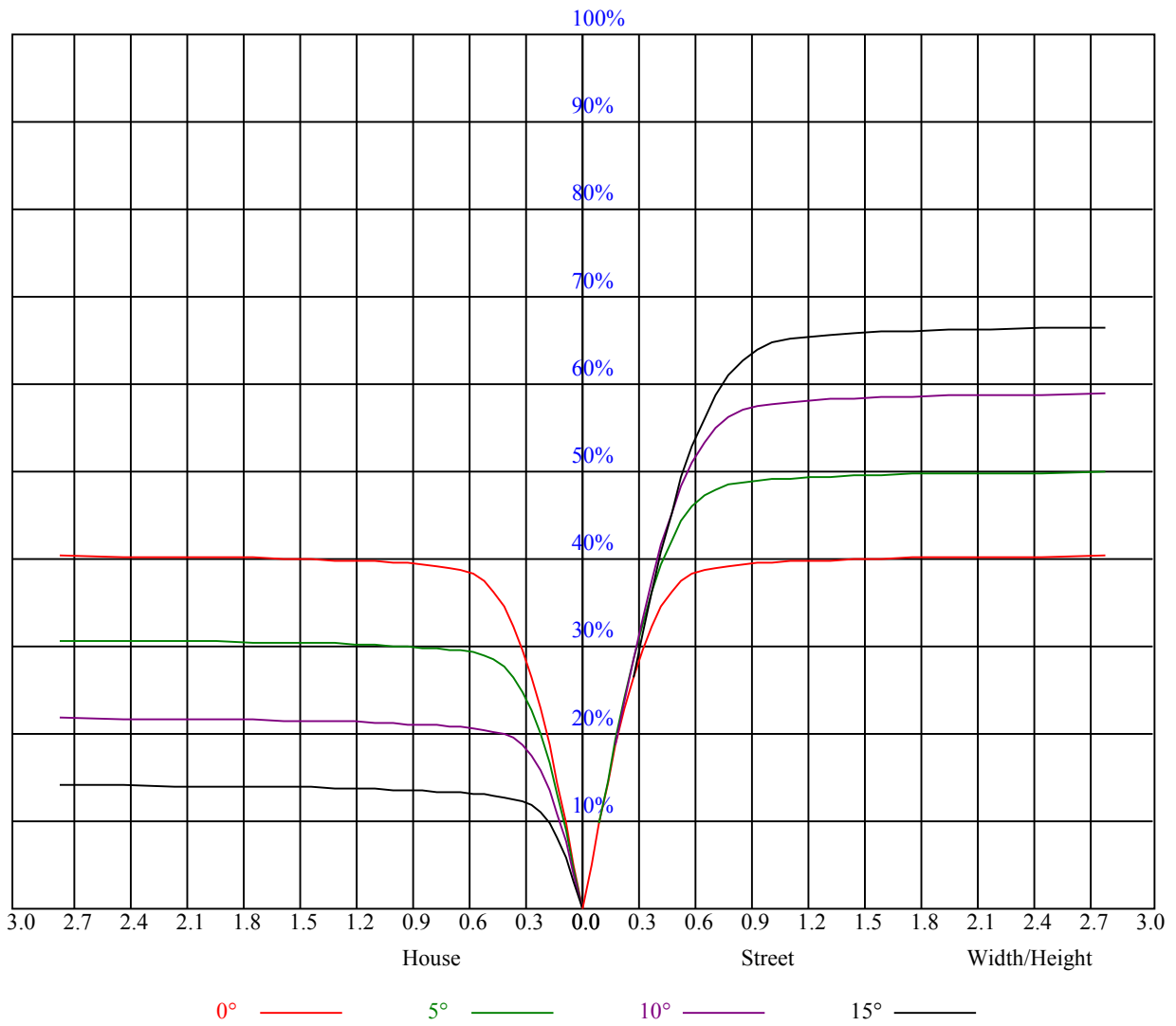
Glare	Quality	Service Values Illuminance(lx)							
1.15	A	2000	1000	500	<=300				
1.5	B		2000	1000	500	<=300			
1.85	C			2000	1000	500	<=300		
2.2	D				2000	1000	500	<=300	
2.55	E					2000	1000	500	<=300
		a	b	c	d	e	f	g	h

Luminance Limiting Curve





RHOCC	80			70			50			30			10			0
RHOW	50	30	10	50	30	10	50	30	10	50	30	10	50	30	10	0
RCR	COEFFICIENTS OF UTILIZATION RHOFC=20 CU															
0	0.98	0.98	0.98	0.95	0.95	0.95	0.91	0.91	0.91	0.87	0.87	0.87	0.84	0.84	0.84	0.82
1	0.91	0.89	0.87	0.89	0.88	0.86	0.86	0.85	0.83	0.83	0.82	0.81	0.80	0.79	0.79	0.77
2	0.86	0.83	0.80	0.84	0.81	0.79	0.82	0.79	0.77	0.79	0.77	0.76	0.77	0.75	0.74	0.73
3	0.81	0.77	0.74	0.80	0.76	0.73	0.77	0.75	0.72	0.76	0.73	0.71	0.74	0.72	0.70	0.69
4	0.76	0.72	0.69	0.75	0.72	0.69	0.74	0.71	0.68	0.72	0.69	0.67	0.71	0.68	0.67	0.65
5	0.73	0.68	0.65	0.72	0.68	0.65	0.70	0.67	0.64	0.69	0.66	0.64	0.68	0.65	0.63	0.62
6	0.69	0.65	0.62	0.68	0.64	0.61	0.67	0.64	0.61	0.66	0.63	0.61	0.65	0.62	0.60	0.59
7	0.66	0.61	0.58	0.65	0.61	0.58	0.64	0.61	0.58	0.63	0.60	0.58	0.62	0.60	0.57	0.56
8	0.63	0.59	0.56	0.62	0.58	0.56	0.62	0.58	0.55	0.61	0.58	0.55	0.60	0.57	0.55	0.54
9	0.60	0.56	0.53	0.60	0.56	0.53	0.59	0.55	0.53	0.58	0.55	0.53	0.58	0.55	0.53	0.52
10	0.58	0.54	0.51	0.57	0.53	0.51	0.57	0.53	0.51	0.56	0.53	0.50	0.56	0.53	0.50	0.49



Intensity data(cd)

C/ γ (°)	0.0	5.0	10.0	15.0	20.0	25.0	30.0	35.0	40.0
0.0	1979.02	1951.53	1818.88	1590.02	1248.84	818.02	369.27	71.94	34.18
45.0	2001.72	1930.02	1762.11	1463.95	1092.88	639.95	321.47	47.80	28.74
90.0	1987.38	1896.56	1677.26	1391.65	988.97	554.57	169.88	41.77	26.83
135.0	1991.56	1931.81	1750.76	1457.97	1108.42	675.81	306.53	54.38	30.23
180.0	1979.02	1911.50	1717.30	1417.34	1056.49	629.62	198.86	47.44	29.58
225.0	2001.72	1960.49	1827.24	1555.97	1174.68	812.22	366.70	68.78	35.61
270.0	1987.38	1969.46	1848.75	1600.78	1279.91	881.36	448.15	87.24	38.36
315.0	1991.56	1940.77	1791.39	1508.16	1191.83	758.86	324.10	64.00	32.80
360.0	1979.02	1951.53	1818.88	1590.02	1248.84	818.02	369.27	71.94	34.18
C/ γ (°)	45.0	50.0	55.0	60.0	65.0	70.0	75.0	80.0	85.0
0.0	23.90	19.00	15.06	12.13	9.98	8.54	7.59	6.57	5.14
45.0	21.45	17.21	13.62	11.17	9.20	8.07	7.17	6.15	4.84
90.0	20.61	16.49	13.09	10.58	8.90	7.95	7.05	5.92	4.78
135.0	21.87	17.51	13.80	11.17	9.20	8.13	7.23	6.21	4.84
180.0	21.51	16.97	13.56	10.99	9.08	8.07	7.17	6.15	4.90
225.0	24.68	19.00	14.70	12.01	9.86	8.48	7.65	6.57	5.32
270.0	25.75	19.72	15.72	12.55	10.10	8.66	7.77	6.81	5.38
315.0	23.24	18.52	14.70	11.83	9.80	8.48	7.59	6.63	5.32
360.0	23.90	19.00	15.06	12.13	9.98	8.54	7.59	6.57	5.14
C/ γ (°)	90.0								
0.0	4.42								
45.0	4.48								
90.0	4.48								
135.0	4.42								
180.0	4.42								
225.0	4.60								
270.0	4.54								
315.0	4.48								
360.0	4.42								